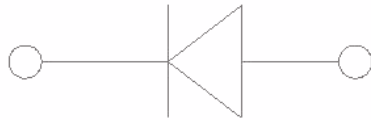


V_R 300V
 I_{FAV} 200mA

Extreme fast switches

: SOD523

:



($T_a=25$ - Unless otherwise specified)

Repetitive peak reverse voltage	V_{RRM}	V		300
Reverse Voltage	V_R	V		300
Non-Repetitive Peak Forward Surge Current	I_{FSM}	A	$t=8.3ms$, Half sine-wave	2
Average forward current	I_{FAV}	mA		200
Power dissipation	P_D	mW		150
Thermal Resistance Junction to Ambient Air	R_{thJA}	- /W		833
Junction temperature	T_j			150
Storage temperature range	T_{stg}			-55 to +150

$T_a=25$ - Unless otherwise specified

Maximum Forward voltage	V_F	V	$I_F=100mA$	1.1
Maximum Reverse current	I_R	nA	$V_R=250V$	150
Minimum Breakdown voltage	V_R	V	$I_R=100uA$	300
Maximum Diode capacitance	C_D	pF	$V_R=0V$, $f=1MHz$	5
Maximum Reverse recovery time	t_{rr}	ns	$I_F=I_R=30mA$, $R_L=100$, $I_{RR}=3mA$	50

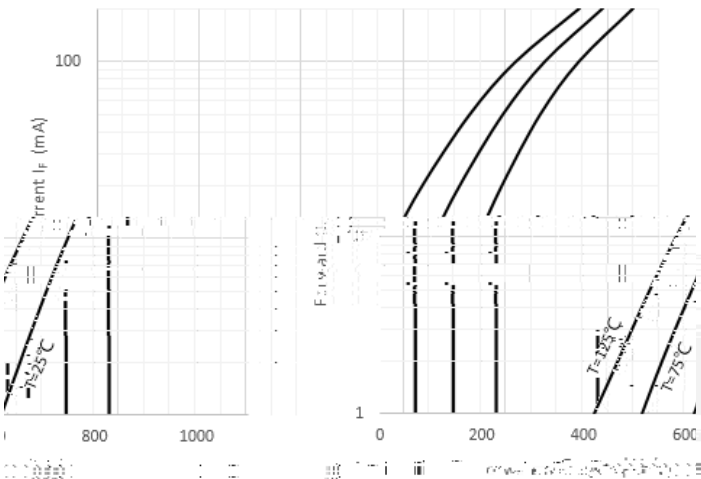


(Example)

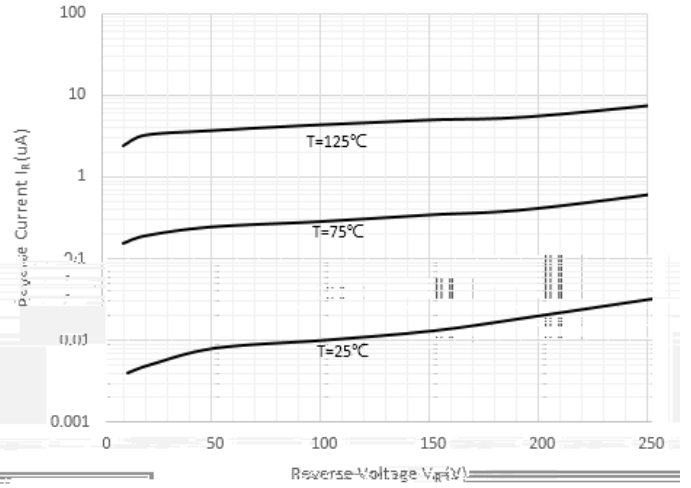
BAS521H	F2	Approximate 0.002	8000	80000	320000	7" reel
---------	----	-------------------	------	-------	--------	---------

(Typical)

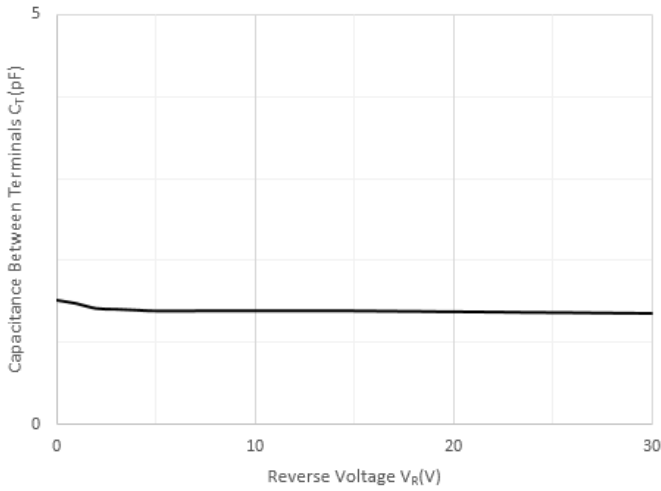
Forward Characteristics



Reverse Characteristics

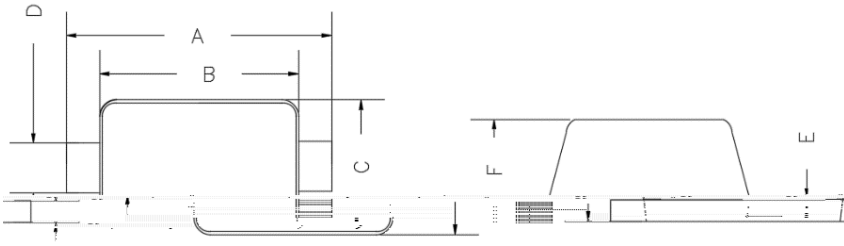


Capacitance Characteristics



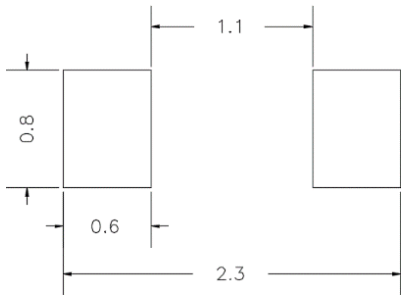


SOD-523



VIEW TOP VIEW SIDE VIEW

DIMENSIONS				
DIM	INCHES		MM	
	MIN	MAX	MIN	MAX
A	0.059	0.067	1.500	1.700
B	0.043	0.051	1.100	1.300
C	0.028	0.035	0.700	0.900
D	0.010	0.014	0.250	0.350
E	0.002	0.008	0.050	0.200
F	0.020	0.028	0.500	0.700



UNIT: mm

ALL DIMENSIONS ARE IN MILLIMETERS

